

Wheel Loaders

G-SERIES EVOLUTION

421G



CASE
CONSTRUCTION



TURNING WORK INTO A CASE EXPERIENCE.

INTRODUCING THE NEW 421G SMALL WHEEL LOADER

Material handling, snow removal, road maintenance, you name it: this loader is up to the job. And with its surprising power, comfort and state-of-the-art features, work has never been more fun.

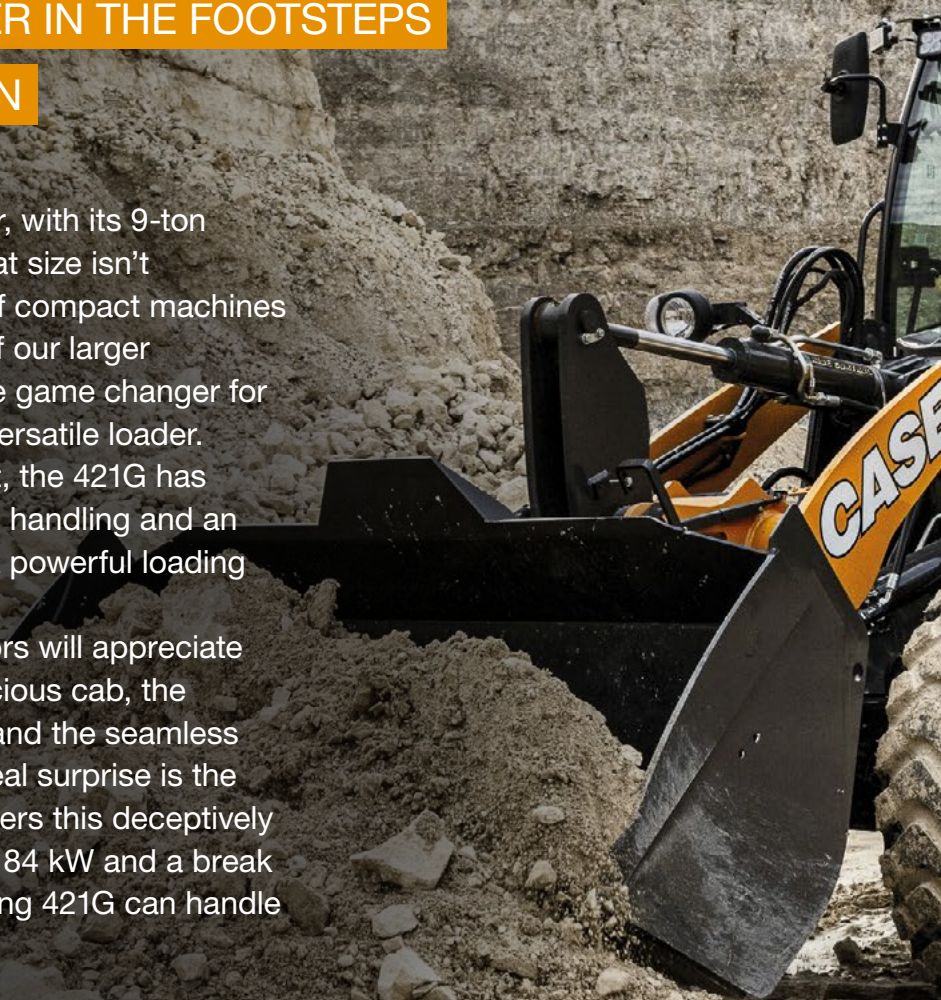


MAIN FEATURES.

A SMALL WHEEL LOADER IN THE FOOTSTEPS OF THE CASE TRADITION

The CASE 421G small wheel loader, with its 9-ton operating weight, demonstrates that size isn't everything. Combining the agility of compact machines with the power and performance of our larger G-series models, the 421G is a true game changer for customers seeking a reliable and versatile loader. Featuring a standard 1.5 m³ bucket, the 421G has been designed to combine smooth handling and an unparalleled level of comfort with a powerful loading and carrying capacity.

Both seasoned and novice operators will appreciate the outstanding visibility of its spacious cab, the ergonomic instrumentation layout and the seamless shift-on-fly transmission. But the real surprise is the FPT turbocharged engine that powers this deceptively small loader. With a peak power of 84 kW and a break out force of 7,161 kg, the unassuming 421G can handle even heavy loads effortlessly.





BEST-IN-CLASS LOADING PERFORMANCE

The 421G loader arm boasts the classic CASE Z-Bar kinematic, with unrivalled break-out force and top hinge-pin and dump height for all loading jobs and applications.



POWERFUL DRIVELINE

Top speed, top traction and top stability. The driveline of the 421G ensures an agile workhorse in full control on all types of terrain.



SERVICEABILITY

Easy access to all components and daily service points: maintaining maximum efficiency day after day has never been simpler.

A COMPACT LOADER WORTHY OF THE CASE NAME.

SIX FEATURES TO REMEMBER



1

TOP-OF-THE-LINE Z-BAR LOADER ARM

Top performance when going to breakout force, hinge pin and dump height.

Easy interchangeability of attachments thanks to its ISO-type hydraulic coupler.

2

DESIGNED FOR COMFORT

Spacious cab with all-round visibility

Entrance from both sides thanks to a right-side door that can be fully opened.

Seat-mounted instrumentation for unparalleled operating comfort and ergonomics.

3

SEAMLESS GEAR SHIFT

New shift-on-fly transmission.

Electro-hydraulically controlled synchronizer for seamless transition between the two gears.

Ideal for jobs requiring a very high tractive effort.

SCAN OR CLICK QR
TO WATCH THE FULL
WALKAROUND



4 HEAVY DUTY DRIVELINE

Heavy duty axles ensure high durability and the best traction for every terrain and application.

Top speed of 40 km/h.

Optional 20 km/h speed limiter available.

10° rear axle oscillation angle for maximum stability

5 EFFORTLESS OPERATION

Electro-hydraulic solutions ensure precision, efficiency and ease of use.

“Return-to” dig, travel and height settings.

Easily adjustable creep speed.

Cruise control feature.

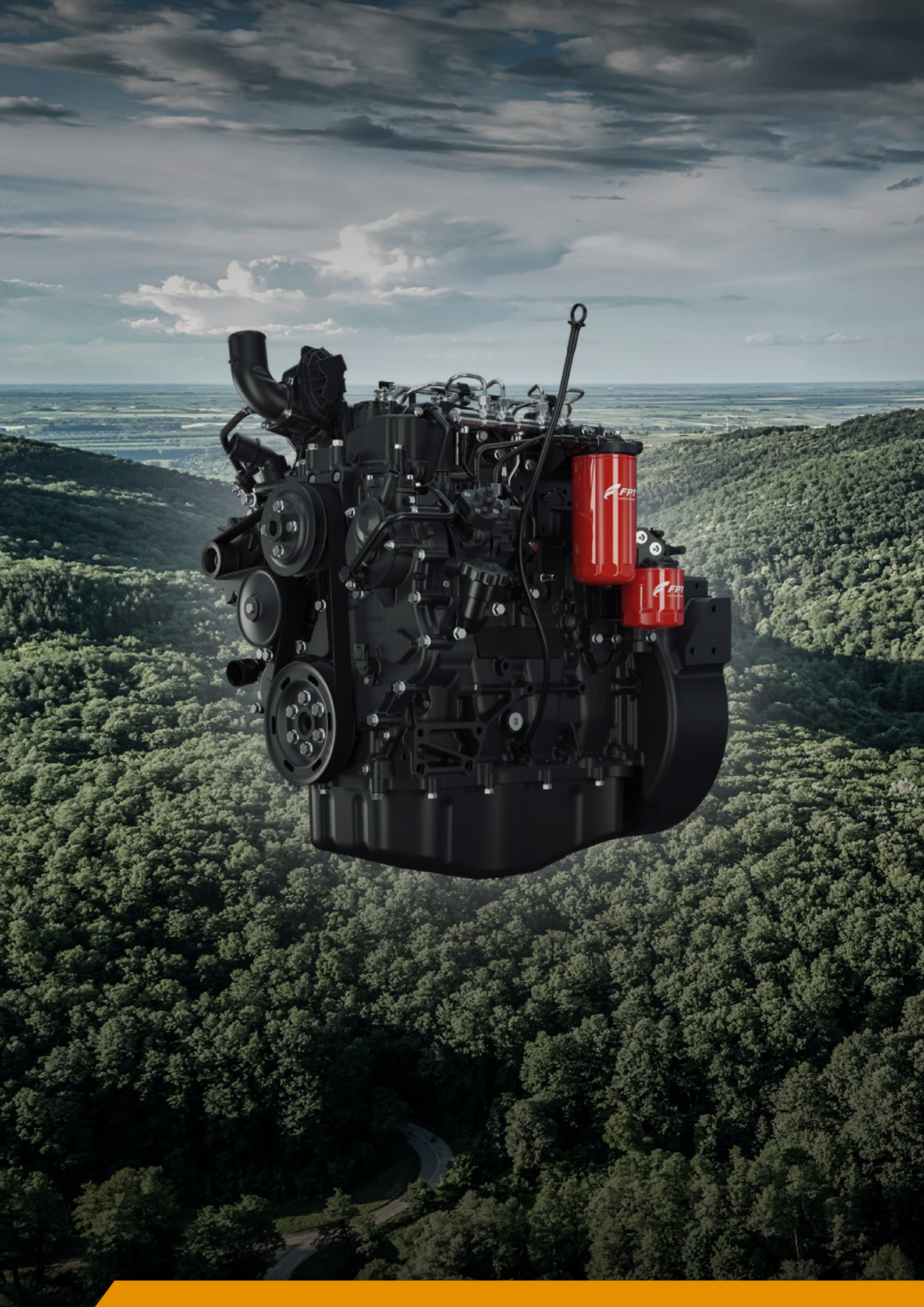
ECO drive mode.

6 CASE LEGENDARY SERVICE

180-year tradition of customer care.

Full range of service solutions.

Enjoy the peace of mind of keeping your equipment in top condition with maximum uptime.



CLEANER, GREENER POWER.

SUSTAINABILITY CHANGES THE WORLD

CASE compact wheel loaders feature advanced in-house powertrain engine technologies developed by our sister company FPT Industrial, reliably delivering high performance with low emissions and operating costs.



3.6 litre turbocharged diesel engine with direct high-pressure common rail injection and intercooler.



Wastegate valve for optimum turbo pressure stability.



EU Stage V compliant with SCR-T aftertreatment for clean and sustainable power.



Compatible with B7 biodiesel (EN 590) and with HVO and CTL, BTL, GTL synthetic fuels (EN 15940).

Engine Type	Turbocharged diesel engine with direct injection and intercooler.	
Manufacturer	Fiat Powertrain Technology (FPT)	
Model	F36	
No. Of Cylinders	4	
Displacement	3.6 liters	
Air Intake	Turbocharged with Waste Gate	
Injection	High pressure common rail	
After Treatment System	SCR-T	
Emission Level	Stage V	
Rated Engine Power		
kW	72	
hp	97	
@ Engine rpm	2200	
Peak Engine Power		
kW	84	
hp	112	
@ Engine rpm	2000	

THE IDEAL WORKING SPACE.

AT CASE WE CARE ABOUT THE OPERATOR

The newly designed operator compartment of the 421G wheel loader maximizes both productivity and comfort, turning work into play. Step inside and see for yourself...

DUAL ENTRY CAB

The 421G features a spacious ROPS/FOPS Level 2 certified cab with right hand door that can be fully opened while providing an unobstructed view during all manoeuvres.

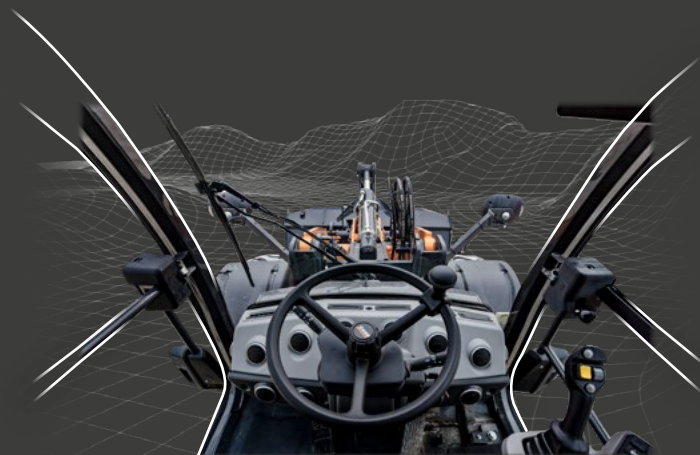
SEAT-MOUNTED INSTRUMENTATION

All controls remain conveniently within reach at all times: joystick, keypad, switches and the encoder for the color display, through which all main settings are easily selectable.

COMFORT AND EFFICIENCY

A broad range of fully-customizable electro-hydraulic functions optimize efficiency while reducing fatigue: Return-to-dig, travel and height controls, ECO mode, cruise control, creep speed, and boom and bucket response settings.





BEST-IN-CLASS OPERATOR COMPARTMENT

A spacious cockpit with dual-entry door and an outstanding all-round visibility.



SEAT-MOUNTED INSTRUMENTATION

All functions at your fingertips for fully-adjustable and ergonomic control.



STANDARD REARVIEW CAMERA

Safety on the job site is ensured by the standard rear and optional front-view site cameras.

MAINTAIN TOP PERFORMANCE.

WITH OUR LEGENDARY AFTER SALES SERVICE

At CASE we have been caring for customers since 1842. We know what it takes.

All our wheel loaders are backed up by a full range of CASE Service solutions. These include extended warranty and planned maintenance packages, fluid analysis, maintenance kits and connectivity tools.

Customers also benefit from MyCASEConstruction, a dedicated app and portal that brings CASE's legendary after sales service into the 21st Century. This solution goes well beyond traditional fleet management, transforming the way customers interact with their equipment, operators and dealers, and helping them make informed business decisions and maintain control over operational costs.

MyCASEConstruction also offers insights, jobsite management tools and performance reports, all conveniently accessible in one place.

ServiceSolutions

Enjoy the peace of mind of knowing CASE Service Solutions will keep your equipment in top condition with maximum uptime, no unexpected costs, and help you optimize your profitability.



CASE CARE

Maximize your machine's uptime and efficiency with this planned maintenance program.



CASE PROTECT

Avoid unexpected costs with this extended warranty program.



CASE FLUID ANALYSIS

Ensure your machine's uptime with detailed fluid reporting.



CASE SITEWATCH

Boost your machine's profitability by tracking and managing your fleet's operating data.

CASE SITECONNECT

Connects your Dealer to your machine for remote support.



SPEC SHEET.

SPECIFICATIONS

TRANSMISSION

Two-speed "shift-on-fly" transmission

Maximum Travel speed km/h 40

Maximum travel speed with optional speed limiter km/h 20

AXLES

Heavy Duty with Limited Slip Differential (front and rear) Standard

Heavy Duty with 100% differential lock (front and rear) Optional

Rear axle oscillation angle 10°

TIRES

Standard size 17.5 R25 L3

Optional size 15.5 R25 L3

BRAKES

Service brake Wet service brake on front and rear axle

Parking brake Spring applied hydraulically released (SAHR)

HYDRAULICS

Loader control valve Closed-center circuit. Electro-hydraulic control

Steering Two hydrostatic cylinders controlled by a hydrostatic steering gear with relief on steering line and flow control
Oil supplied to the integrated steering/loader hydraulic system by a variable displacement pump

Loader controls
Pump Type Variable displacement pump with closed center

AUXILIARY HYDRAULICS

Standard oil flow l/min 95

Max oil flow l/min 125

Max pressure bar 200

FLUIDS CAPACITIES

Fuel tank l 118

DEF (AdBlue®) tank l 21.5

Engine coolant (water / antifreeze) 13.9 + 13,9

Engine oil l 7

Hydraulic oil tank l 74

Front and rear axles l 7.5

Wheel hubs (each) l 1.4

Gearbox l 1.8

CAB PROTECTION

Protection against falling objects (FOPS) According to ISO 3449:2005

Protection against roll-over (ROPS) According to ISO 3471:2008

NOISE EMISSIONS

Sound power level - LwA

Guaranteed sound power level determined according to European Directive 2000/14/EC dB 103

At operator's station - LpA

in compliance with standard ISO 6396:2008 dB 71

ELECTRICAL SYSTEM

Battery capacity

standard weather package 12V 100Ah 850A

extreme weather package (2x) 12 V 60 Ah 600A

Alternator capacity 14 V - 160 A

GENERAL DIMENSIONS

Height to the top of the ROPS mm 3005

Ground clearance mm 349

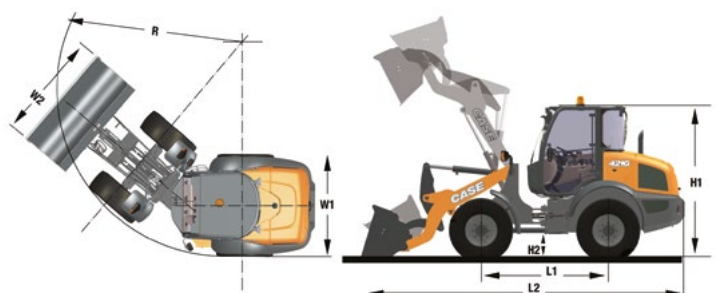
Overall width (exclusive of bucket) mm 2289

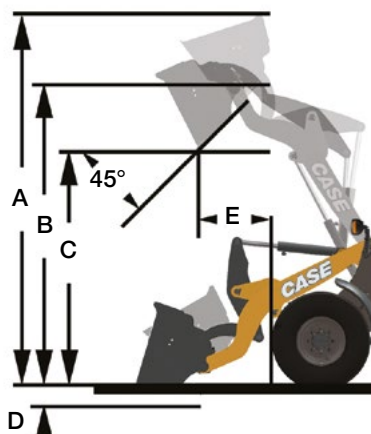
Overall width (with bucket) mm 2400

Wheelbase mm 2600

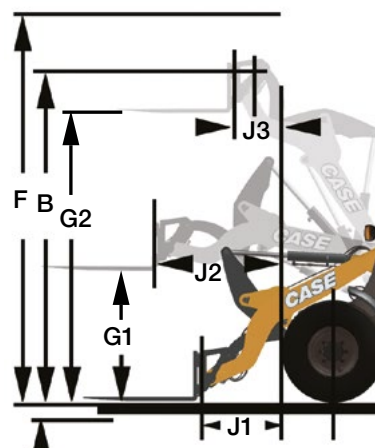
Max. length in carry position mm 6354

Turning radius (outside of tires) mm 4716





SPECIFICATIONS WITH BUCKET			
Bucket Volume (SAE)	m³	1.5	
Tipping load straight	kg	6679	
Tipping load at full turn (40°)	kg	5878	
Payload @50%	kg	2939	
Breakout Force	kg	7161	
A Max bucket height	mm	4940	
B Hinge pin height	mm	3714	
C Dump height @45°	mm	2711	
D Dig Depth	mm	77	
E Reach at full height	mm	860	
Operating weight (std. bucket)	kg	8970	



SPECIFICATIONS WITH FORKS			
Tipping load straight	kg	4851	
Tipping load at full turn (40°)	kg	4275	
Payload @80%*	kg	3420	
B Hinge pin height	mm	3714	
F Max overall height	mm	3839	
G2 Max fork height	mm	3514	
G1 Forks height @ max reach	mm	1708	
J1 Reach @ ground level	mm	815	
J2 Max Reach	mm	1511	
J3 Reach @ max height	mm	716	
Operating weight with forks	kg	8710	

*on even ground, according to ISO 8313 and EN 474-3

STANDARD AND OPTIONS.

ROPS/FOPS Level II deluxe cab with heater	●
Openable right hand door with sliding window	●
Full adjustment of the steering column	●
Air suspended seat	●
Seat mounted EH joystick and cab instrumentation	●
Color display with encoder	●
Keypad for easy machine setting	●
Rear camera	●
Radio ready	●
Standard weather package	●
Emergency steering	●
LED work lights	●
Two travel speed with 40 km/h top speed	●
ECO mode	●
3 rd Function	●
Cruise control	●
Creep speed	●
Standard flow (95 lpm)	●
Remote drain of hydraulic oil	●
Floating function	●
Loader arm and bucket response control	●
Limited slip differential front & rear	●
17.5 R25 tires	●
ISO quick coupler	●
Standard bucket	●
Emergency tow hook	●
Battery disconnect switch	●
P&CM modem	●
Subscription to Case Sitewatch and Site-Connect	●
Operator manual	●

Deluxe cab with air conditioning	○
Radio with MP3 and USB plug	○
Heated air suspension seat	○
Wide internal view mirror	○
Heated external rear view mirrors	○
Front and rear view camera	○
Extra steps for right hand side access to the cab	○
Rotating beacon	○
Predisposition for fire extinguisher	○
Precleaner	○
Reverse alarm	○
Ride control	○
4th function	○
14-pin front electric socket	○
Anti-drop valves	○
Extreme weather package	○
High flow (125 lpm)	○
Return to Travel, Dig, Height	○
Ride control	○
Speed limiter to 20 km/h	○
15.5 R25 tires	○
Snow tires	○
Road homologation	○
Light materials bucket	○
4-in-1 bucket	○
Forks with transport protection	○

● Standard | ○ Options



BUILDING ON OUR HERITAGE.

Since 1842, at CASE Construction Equipment we have lived by an unwavering commitment to build practical, intuitive solutions that deliver both efficiency and productivity.

The vast CASE dealers' network is always ready to support and protect your investment.
At the end of the day, we do what's right for our customers and our communities
so that they can count on CASE.

CNH Industrial
Deutschland GmbH
Case Baumaschinen
Benzstr. 1-3 - D-74076 - Heilbronn
DEUTSCHLAND

CNH Industrial
Maquinaria Spain, S.A.
Avenida Aragón 402
28022 Madrid
ESPAÑA

CNH Industrial France, S.A.
16-18 Rue des Rochettes
91150 Morigny-Champigny
FRANCE

CNH Industrial Italia Spa
Lungo Stura Lazio 19
10156, Torino
ITALIA

CASE Construction Equipment
Cranes Farm Rd
Basildon - SS14 3AD
UNITED KINGDOM

NOTE: Standard and optional fittings can vary according to the demands and specific regulations of each country. The illustrations may include optional rather than standard fittings - consult your Case dealer. Furthermore, CNH Industrial reserves the right to modify machine specifications without incurring any obligation relating to such changes.

Conforms to directive 2006/42/EC

CASECE.COM
00800-2273-7373

The call is free from a land line.
Check in advance with your Mobile Operator if you
will be charged. Toll free number not available from
all calling areas.